

INSTALLING OF USB SERIAL PORT DRIVER

With this explanation, you will be able to install the USB serial driver. Hence you will know the COM number of the USB device.

The content of the CD Rom:

In the CD Rom, inside the USB folder you will find below folders. We will use KO driver to the USB Serial Port.



Recognition of the USB serial device

When you first connect the USB device to the computer, a wizard window will pop-up because the computer has found a new hardware.

We are going to install 2 drivers.

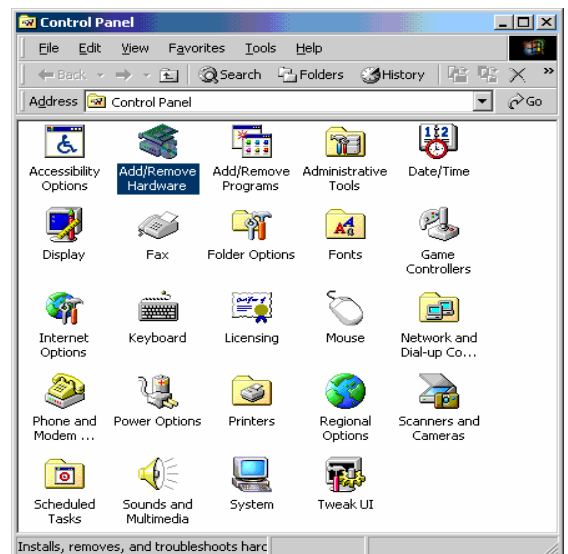
First Installation

If it is not the first time you connect the USB device, you need to open this window manually.

In this case you need to open the “Control Panel” from the setting menu located on the start menu.

There, click on “Add Hardware”.

Be careful : the displayed control panel happens to be different, in order to obtain this window, you need to switch into classic view.





The window on the left will appear :
At the question : “ Can Window connect to Windows Update to search for software?” , click on “ No, not this time”.



On the next window : “What do you want the wizard do?” => click on “Install from the list or specific location (Advanced), then click “Next”

Click on “Browse” button, then in the CD Rom choose the “ KO driver folder”.



A warning message will appear=> click on “Continue anyway”.



The installation has been completed => click on “Finish”.

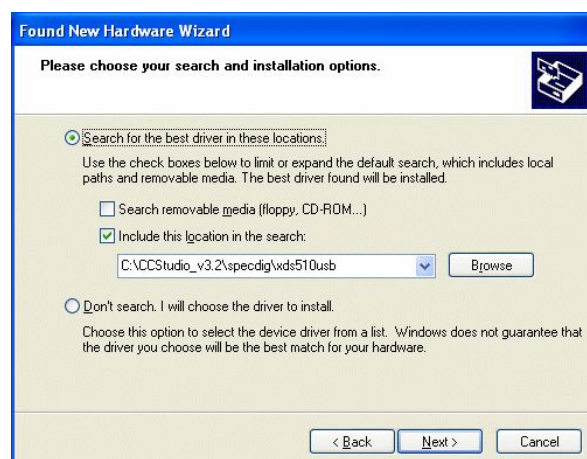
Second Installation

Open once again the wizard window, this time we will install the driver of the “USB Serial Port”.



As before click on “Install from the list specific location (Advanced)”, then click “Next”

On the next window click on “ Search the best driver in these location”=> then click on “Include this location in search “ => then click on ”Browse” and select once again “ KO driver”.



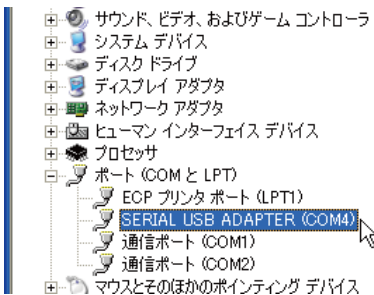
A warning message will appear. Click on “Continue anyway”.

The installation will proceed



Click on “Finish” when the installation has been completed.

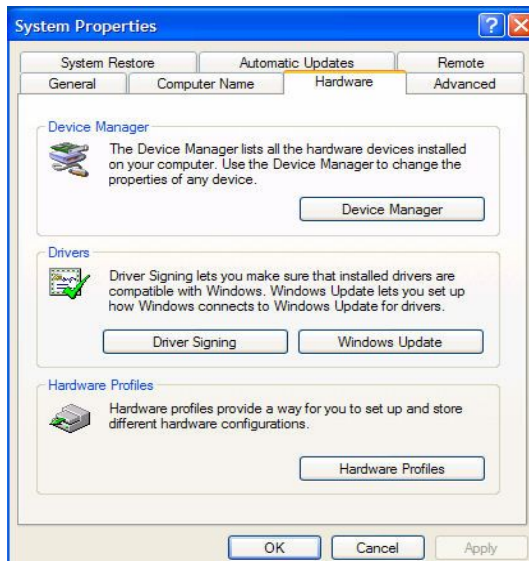
Confirmation



If the installation has been correctly done, the number of the port will be displayed in the device manager.

How to open the device manager?

Click right on “My Computer”, then select “property”



On the Hardware tab, click on the device manager.